

Quantus

Fiber Laser

Reliable turnkey laser cutting system designed to meet volume production requirements of today's metal fabricator.



MULTICAM
Complete CNC Solutions

LASER PRECISION... ...THAT'S AFFORDABLE

QUANTUS FIBER LASER

The Quantus Fiber Laser from MultiCam is the next generation in Laser Cutting systems. Quantus combines the precision of ball screw drives with the simplicity of our CNC controls and the latest fiber laser technologies. All this ensures the Quantus Fiber Laser is the most advanced, industrial grade and cost effective laser cutting system on the market.

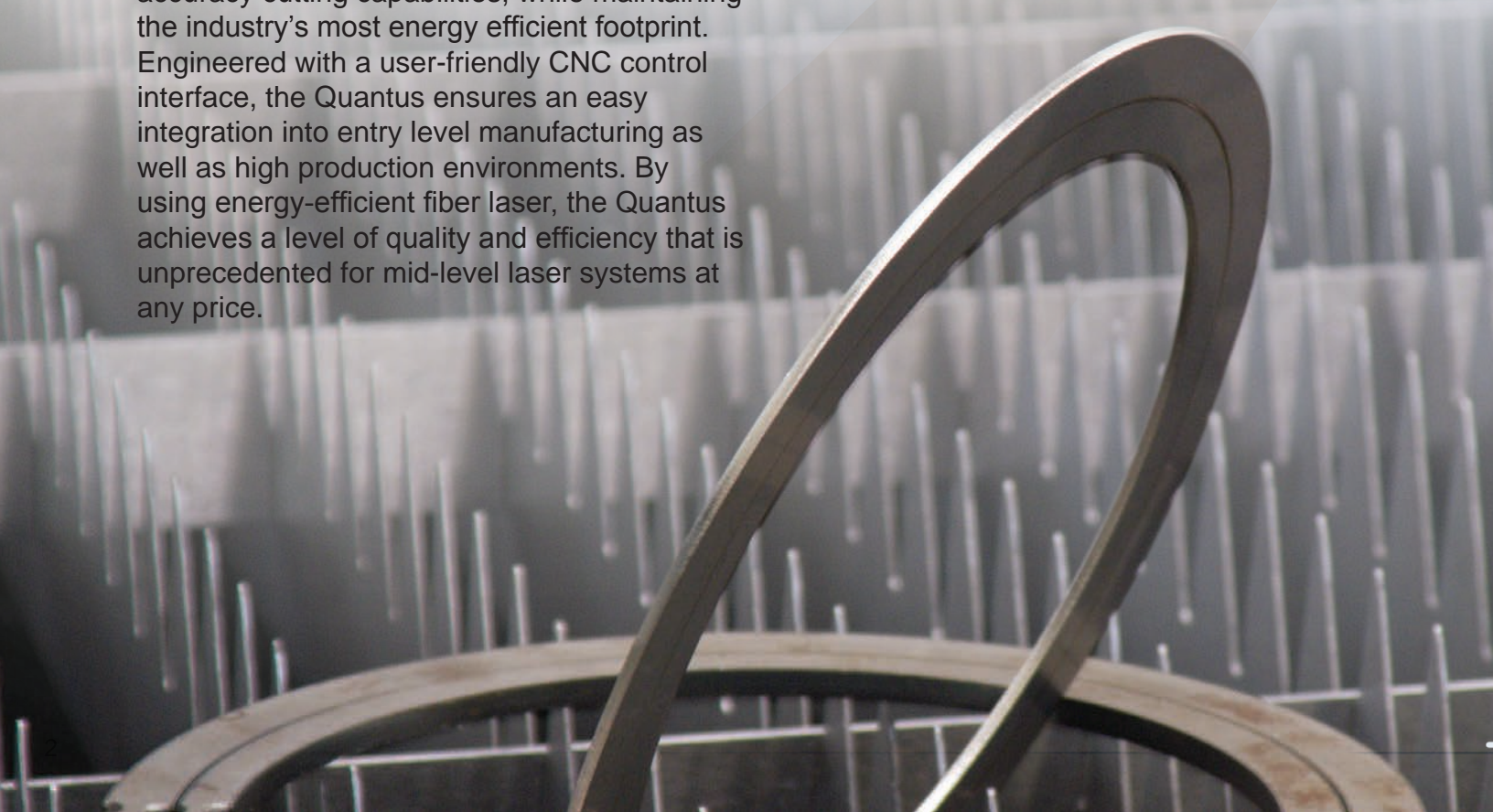
- Equipped with advanced fiber laser technology
- Work areas of 4' x 4', 4' x 8' and 5' x 10'
- Ground Ball screw drives
- Advanced yet easy to use CNC Controls
- Range of productivity options.

The Quantus was developed to provide high accuracy cutting capabilities, while maintaining the industry's most energy efficient footprint. Engineered with a user-friendly CNC control interface, the Quantus ensures an easy integration into entry level manufacturing as well as high production environments. By using energy-efficient fiber laser, the Quantus achieves a level of quality and efficiency that is unprecedented for mid-level laser systems at any price.

The Quantus is equipped with the latest ultra-efficient AIR COOLED Quasi-CW lasers with power levels starting at 1500 Watts* and going up to 3000 Watts*. The Quantus was designed to be compact and space saving, taking less room than traditional systems. In addition, to a host of available laser powers, the Quantus can also include a range of options from multi-table pallet changers to pipe and tube cutting attachments.

The Quantus offers ultra-low power consumption, allowing for the lowest operating costs among all laser types. The Quantus requires no optical systems alignment, laser service or laser replacement parts making this system virtually maintenance free.

Best of all, it is **MADE IN THE USA!**



FEATURES & BENEFITS

No machine in its class offers more standard features than the innovative and versatile Quantus Fiber Laser System.

As part runs have gotten smaller and the products more complex, the demand to lower costs has never been greater. Long lead times are a thing of the past. Manufacturing today is on demand!

The solution is Quantus...
The Quantus was designed for a wide range of materials both ferrous and non-ferrous. The modular approach to the system design ensures that the laser platform is viable for years to come while allowing the user to select the best laser choice now!

- Ultra efficient fiber laser technology up to 3000 Watts*
- Integrated control pendant
- Laser cutting head with non-contact height following
- Choice of cutting optics from 50mm to 200mm
- Optional table shuttle system
- Optional tube cutting attachments
- Laser safety shroud
- Side air blow off
- Gas pressure regulator
- Quickly integrates into any production environment
- Precision drives for fast cutting and high throughput
- Quick and easy installation and start up
- Easily upgradable laser power
- Virtually maintenance free
- Up to 100,000 hours of laser life
- No laser gases required



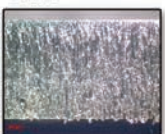
FiberCAB Produces Superior Edge Quality in a Range of Ferrous and Non-Ferrous Metals

Stainless Steel

2mm



3mm



Mild Steel

1mm



4mm



Aluminum

1mm



4mm



Copper

1mm



4mm



Applications and Materials Suited to the Quantus Fiber Laser

- Mild Steel
- Stainless Steel
- Aluminum
- Brass
- Copper
- Titanium
- Alloy Metals
- Ceramics
- Graphite
- Composites
- Silicon Cutting
- Coated & Plated Metals
- Opaque Plastics
- Blank Cutting
- Plate Cutting
- Aircraft Skins
- Medical Devices



Machine Table Height	36" (910mm) w/o pallet changer
Max Load Weight	1000 lbs.
Axis Stroke	4'x4' Table: 51" x 51" (1300mm x 1300mm) 4'x8' Table: 51" x 98" (1300mm x 2500mm) 5'x10' Table: 60" x 120" (1524mm x 3048mm)
Repeatability	.002" (.04mm)
Drive Feed Method	Ground Ball Screw
Worksheet Clamps	Manual
Assist Gas System Specs	20 BAR - 232 psi
Gas Supply	Nitrogen, Oxygen
Power Supply	Laser Source Dependent
Laser	Single and Multi-Mode (model dependent)
Wavelength	1070-1080 um



1025 West Royal
Lane
DFW Airport, TX
75261



By phone:
+1 972.929.4070
Hotline:
855.894.3136



By email:
sales@multicam.com



Or online at:
www.multicam.com