

## Technical Specifications

<b>Dimensions (L*W*H)</b>		Glory 1604: 12700 x 5590 x 3245 mm Glory 1604 + Stacker: 19560 x 5590 x 3245 mm Glory 1604 + 8 Meters Tunnel Dryer + Varnish + Stacker: 30635 x 5590 x 3245mm			
<b>Productivity</b>		Linear speed up to 150 m/min			
<b>Substrate/Handling (W*L)</b>		Types: Wide range of corrugated boards ( coated, white, kraft etc.) Max. board size: 1600 x 2800 mm Mini. board size: 450 x 400 mm Thickness: 1.5-11 mm Handling: Lead-edge feeder, precise media positioning, vacuum suction, conveyor belt; All designed for reliable and high-quality printing.			
<b>Printing</b>		Technology: Single-pass, drop-on-demand, piezo inkjet technology. Print head: Industrial Kyocera (max.14 pcs per color) Width: Max. printing width 1560mm Ink type: Han FullColor® aqueous ink Ink color: Cyan, Magenta, Yellow, Black(CMYK) + (Violet,Orange optional ) Drying: Infrared drying system			
<b>Printing Modes</b>	<b>Resolution</b>	600 x 400	600 x 600	600 x 900	600 x 1200
	<b>Linear Speed</b>	150m/min	100m/min	66m/min	50m/min
<b>RIP</b>		Software: 3rd party RIP Software Input formats: PDF, EPS, TIFF, JPEG and AI etc. Provide color solutions for various printing substrates			
<b>Features</b>		Warp detecting and warning system Automatic ink cost calculating function Remote defect diagnosis & system upgrades Production management system available			
<b>Operating environment</b>		Temperature: 22° to 30°C Humidity: 40%-80% RH (non-condensing) Power supply: 380V±3%/3 phase/50Hz Air supply: 6 bar (85 Psi) to 8.4 bar (120 Psi)			
<b>Total Power</b>		Glory1604: 175 Kw (Dryer 88 kw included) Priming Unit: 3 Kw Constant Temperature & Moisture Room: 5 Kw Tunnel Dryer: 180 Kw (Dryer 144 kw included) varnishing Unit: 75 Kw (Dryer 60 kw included) Stacker: 5 Kw		<b>In Actual Production (Reference Only)</b> Glory1604: 35 Kw (IR Dryer Excluded) Priming Unit: 1.2 Kw Constant Temperature & Moisture Room: 3 Kw Tunnel Dryer: 25 Kw (IR Dryer Excluded) varnishing Unit: 9 Kw (IR Dryer Excluded) Stacker: 3 Kw	
<b>Weight</b>		Glory1604: 16600 kg Priming Unit: 900 kg Constant Temperature & Moisture Room: 2600 kg Drying Unit: 9200 kg varnishing Unit: 3200 kg Stacker: 2300 kg			



## Glory 1604

### Single-pass Corrugated Digital Inkjet Press

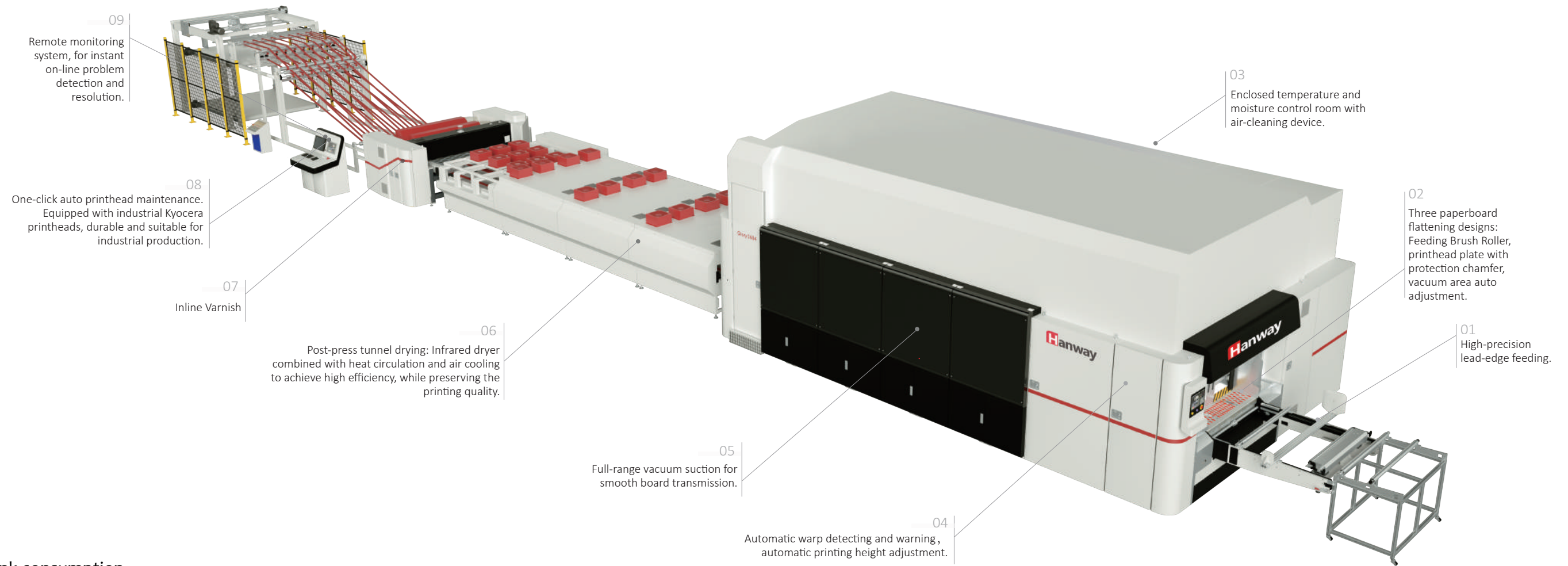


Shenzhen HANWAY Industrial Digital Equipment Co.,Ltd.  
Add: The Third Factory, NO.322 Yuanhu Road, Longgang District Shenzhen China.  
Tel: +86 0755-29375889  
Fax: +86 0755-23217841  
E-mail: info-hanway@hanglorygroup.com  
Http://www.hanway-print.com




# Glory 1604

- Industrial robust design with the fastest production speed up to 150 m/min and High-Flexo like print quality.
- Digital printing technology brings you the experience of instantaneous response and seamless switch among multiple short-run orders.
- Applicable to all kinds of substrates including Kraft, Mottled White and Coated White.
- Water-based ink costs less and supports the wide range of packaging applications.



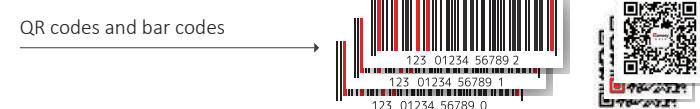
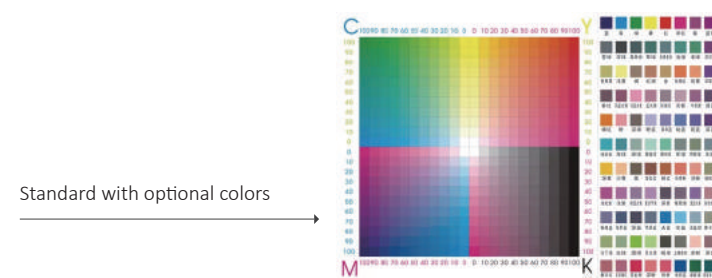
## Lower ink consumption



Image Dimension: 569 x 373 mm  
 Image Pixel: 13440 x 8808  
 Resolution: 600 x 600 dpi



## Better Graphic Designs



## Higher Printing Quality



As high as 1200dpi in resolution, attributed to high-performance Kyocera printheads.

## Quicker Job Changeover

