

SPECIFICATIONS

Model	• HM 1800R
Print Head	• Water-based Kyocera print head
Print head Qty	• 4—6 pcs
Max Printing Resolution	• 600 x 1200 dpi
Production Speed	• 600 x 600 dpi (1pass) • 600 x 1200 dpi (2pass) • 320m ² /hr • 165m ² /hr
Printing Height	• 2—30 mm
Media Conveying	• Roll-to-Roll, Auto constant tension feeding&taking up, Separate media entry unit (optional)
Max Printing Width	• 1900 mm
Max Media Width	• 1950 mm
Dimension (L/W/H)	• Printer: 4200 mm x 1920 mm x 2150 mm • Package: 4400 mm x 1950 mm x 2240 mm
Ink Type	• Water-based sublimation ink
Ink Color	• 4-8 colors • C, M, Y, K, Orange, Blue, Fluorescence yellow, Fluorescence pink, Lc, Lm, Turquoise (optional)
Ink Supply	• Peristaltic-pump ink supply, Ink degassing, Auto negative pressure system
Media Type	• Transfer paper (paper weight: 40-100gr/sqm)
Max Roll Diameter	• 500mm (standard unwinder&winder roll) • 1200mm (optional media entry unit)
Max Roll Weight	• 200kg (full width, standard unwinder&winder roll)
Drying	• Hot air
Rip Software	• Caldera, Neostampa, Texprint
Power supply	• AC380V three phase 37.5A (23kW) 50Hz/60Hz
Compressed air supply	• 0.6 Mpa 0.15m ³ /hr (dry,no oil or water)
Working Environment	• Temperature: 20~28 C (68~77 F) • Relative humidity: 45-60% (no condensing)

HOMER
Digital Textile Printer



HM 1800R

Industrial high-speed Roll-to-Roll dye-sublimation digital printer

- Outstanding printing speed and quality; excellent reliability and stability.
- Advanced mechanic and software design; High-efficiency data processing technology.
- Top-level R&D team ensures continuous innovation and product optimization, and keeps us at the technology forefront in digital inkjet printing.
- Strong worldwide service team responds promptly to your questions and concerns.
- Cost-effective products bring you more business and profit.

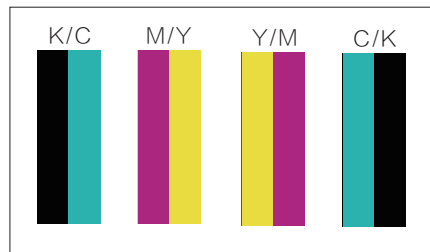


Shenzhen HOMER Textile Tech Co.,Ltd
Add:The Third Factory, NO.322 Yuanhu Road, Longgang District, Shenzhen, China.
Tel: +86 0755-23061585
Fax: +86 0755-23217841
E-mail: info-homer@hanglorygroup.com
Http: //www.homertech.com



HOMER
Digital Textile Printer

HM 1800R



Symmetrical color alignment

Color sequences are aligned in symmetry, so in back and forth printing the color aberration is reduced and color consistency is improved.

Up to 320 m²/hr printing speed

Attributed to advanced mechanical structure and self-developed high-performance hardware & software system, the equipment delivers printing speed up to 320 m²/hr.

Anti-scratch printhead protection design

The Anti-scratch system with laser sensors will suspend the printhead carriage for any potential media irregularities, to prevent damage to the printheads and maximize printheads' working life.



Industrial ink supply system: Peristaltic-pump ink supply+Automated negative pressure monitoring & adjusting system+ Efficient ink degassing

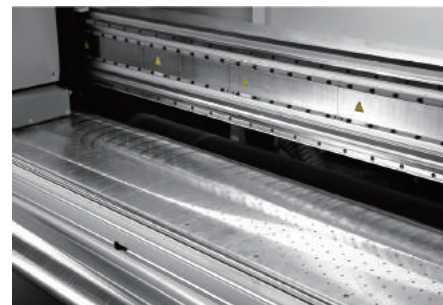
Peristaltic pumps keep the kinetic energy of ink supply at a constant level; negative pressure is detected and adjusted in real time automatically; the efficient degassing modules clear the bubbles in ink tubes to avoid ink starvation. These three designs work together to make ink spurting smoothly to provide higher printing stability for industrial continuous production.

Integrated software control system

Self-developed control software is fully automatic for smart operation. One operator is able to control multiple machines.

Industrial-level stable performance

This equipment has passed the 7x24 hour reliability test. The high-end industrial design and sound digital solutions have made it a perfect choice for industrial production.



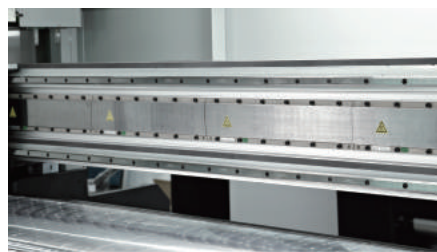
Adjustable vacuum system

The vacuum power can be adjusted by software for different printing media, so the media flatness is optimized to improve the accuracy of ink drop point.



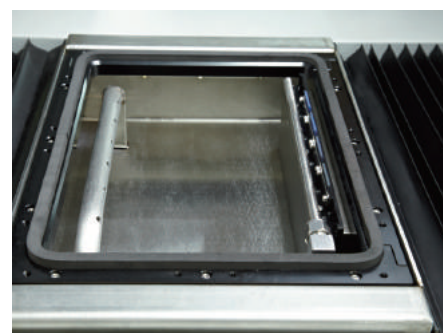
Kyocera-certified original ink

The Homer ink with Intertek certification has been certified by Kyocera, matching well with Kyocera print heads. It delivers pure color and smooth output.



Magnetic linear motor and steel rail beam

The rail beam is made of high-strength steel with top straightness. Combined with magnetic levitation motor, it improves the stability and smoothness of the printhead carriage's back and forth movement.



Intelligent constant-moisturizing capping system and Creative auto-wiping printhead self-cleaning system

Built-in humidifier enables mist spray automatically, so constant moisturizing of nozzles guarantees the stability of ink supply system and prevents blocked nozzles caused by dry ink. Automated head wiping removes the residual ink on the nozzle surface, to guarantee continuous printing.



Separate media entry unit (Optional)

Support 10,000 meters jumbo roll unwinder up to φ 1200mm.



Tension-adjustable continuous winding/unwinding control technology

Equipped with full servo motors for feeding and taking-up, the stepping accuracy of the machine is greatly enhanced. The laser sensor at the winding section measures the roll diameter in real time for constant and smooth winding.