

## SPECIFICATIONS

Model	HT1610UV	HT2512UV			HT2518UV		HT3116UV		HT3020UV		
Printhead	Kyocera KJ4A	Kyocera KJ4A			Kyocera KJ4A		Kyocera KJ4A		Kyocera KJ4A		
Quantity of printheads	2-4 pcs (Single row)	3-4 pcs (Single row)	4-8 pcs (Double rows)	8-10 pcs (symmetric array)	4-8 pcs (Double rows)	8-10 pcs (symmetric array)	4-8 pcs (Double rows)	8-10 pcs (symmetric array)	4-8 pcs (Double rows)	8-10 pcs (symmetric array)	
Resolution	1200*1200dpi										
Print speed	Draft	36m <sup>2</sup> /h	48m <sup>2</sup> /h	68m <sup>2</sup> /h	100m <sup>2</sup> /h	73m <sup>2</sup> /h	117m <sup>2</sup> /h	90m <sup>2</sup> /h	120m <sup>2</sup> /h	95m <sup>2</sup> /h	125m <sup>2</sup> /h
	Production	27m <sup>2</sup> /h	33m <sup>2</sup> /h	53m <sup>2</sup> /h	78m <sup>2</sup> /h	56m <sup>2</sup> /h	80m <sup>2</sup> /h	66m <sup>2</sup> /h	90m <sup>2</sup> /h	70m <sup>2</sup> /h	95m <sup>2</sup> /h
	Quality	20m <sup>2</sup> /h	23m <sup>2</sup> /h	40m <sup>2</sup> /h	56m <sup>2</sup> /h	42m <sup>2</sup> /h	58m <sup>2</sup> /h	51m <sup>2</sup> /h	64m <sup>2</sup> /h	53m <sup>2</sup> /h	73m <sup>2</sup> /h
Print mode	Unidirectional and bidirectional										
Max width	1.6m * 1.0m	2.5m * 1.2m			2.5m * 1.8m		3.0m * 1.5m		3.0m * 2.0m		
Max media thickness	100mm										
Media type	Rigid and flexible flat materials										
Ink	Environmental friendly UV curable ink(VOC free)										
Ink color	C、M、Y、K、Lc、Lm、W (varnish is optional when there is no Lc and Lm)			C、M、Y、K、Lc、Lm、W、V							
Image format	Adobe Postscript Level3、PDF、JPEG、TIFF、EPS、AI										
Machine size(L*W*H)	3.44m*2.21m*1.28m	4.67m * 2.51m * 1.38m			4.67m*3.03m*1.38m		5.22m * 2.71m * 1.38m		5.22m * 3.24m * 1.38m		
Machine net weight	570KG	1150KG			1300KG		1450KG		1520KG		
Machine gross weight	990KG	1745KG			2000KG		2160KG		2330KG		
Power consumption	5.3KW(27A)	8.3KW(20A)									
Power supply	230VAC.50Hz L/N/PE	400VAC.50Hz 3P/N/PE									
Certification	CE, FCC										
RIP support	Onyx, Caldera										
UV Curing	Mercury vapor UV lamps, LED(optional)										
Interface	High Speed PCIE										
Environment	Separated workroom in good cleaning and ventilated condition, avoid direct sunlight Temperature: 18°C – 30°C(64°F-86°F) Constant Humidity: 30%-70%										

©Above information for reference only and subject to change without notice. Shenzhen Handtop Tech Co.,Ltd all rights reserved.



**Create value for customers; be a world-leading manufacturer of smart digital printing equipment.**

- Diversified product configuration and application solution can match the different demand in advertising, decorating, glass and other industries.
- Reliable stability combines the outstanding printing quality and speed performance.
- Top-level R&D team ensures prompt optimization and upgrade for new products and keep advanced technology in digital printing field.
- Strong worldwide after-sales service team quickly shoots your problem.
- High cost-value product brings you more business.



**Shenzhen HANDTOP Tech Co.,Ltd**

Add: The Third Factory, NO.322 Yuanhu Road, Longgang District Shenzhen China.  
Tel: +86 0755-2796 0460 E-mail: info-handtop@hanglorygroup.com  
Fax: +86 0755-2321 7841 http://www.handtopuv.com



# HT3116UV/HT3020UV/HT2512UV/HT2518UV/HT1610UV

## HT3116UV Flatbed

3.1\*1.6m MEDIA AREA

## HT2512UV Flatbed

2.5\*1.22m MEDIA AREA

## HT2518UV Flatbed

2.5\*1.8m MEDIA AREA

## HT3020UV Flatbed

3.05\*2.05m MEDIA AREA

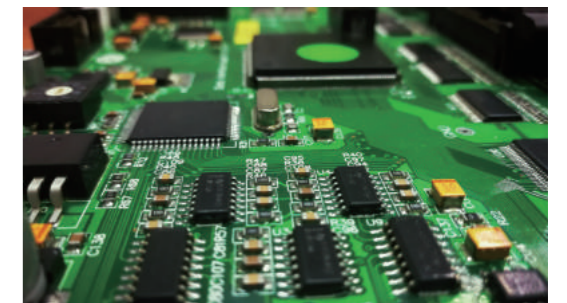
## HT1610UV Flatbed

1.6\*1.0m MEDIA AREA

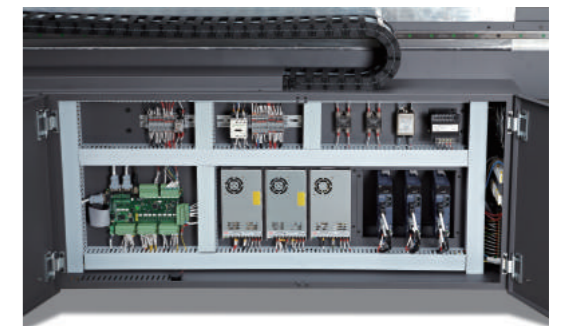
- 1 Automatic negative pressure system  
Using PCB board to control negative pressure, setting the negative pressure data from software.
- 2 Kyocera Print Heads(one head with 2 colors)  
Featuring variable dots, true grayscale imaging 4, 6, and 10pl.
- 3 UV-curing Lamps/LED(optional)  
Instant curing of UV ink for fast production. Flexible to be controlled during printing.
- 4 Auto Height Detection System  
Automatically detects height of media up to 100mm thickness and calibrates print head distance for variable dot placement.
- 5 Emergency Stop Switches  
Stop operation from any corner when the printer is in emergency.
- 6 Power vacuum & Lamp Switch  
Switches for vacuum table and lamps.
- 7 Mechanical Pin Registration System  
Pin registration for accurate and consistent rigid media placement.
- 8 Reversible Vacuum Valve  
Reverse the air vacuum for easier rigid media loading and unloading.



- 9 Reversible printing function & Repeat printing mode  
Both reversible and repeat printing mode enables a higher efficiency in production.
- 10 Top Printing Speed:Up to 95 m<sup>2</sup> / hr (HT3020)  
Engineered for high-quality printing and outputs up to 95m<sup>2</sup>/hr with full bleed capacity.(HT3020 kyocera with double rows)
- 11 Static suppression(optional)  
Optional static suppression kit that eliminates static on the substrate.
- 12 On Board Control Module  
Rich functions, self-developed software, independent control module, efficient and convenient.



Self-developed, customized driver and PCB board



Industrialized wiring makes it more artistic

### Kyocera KJ4A Printhead

Nozzle quality : 2656  
Physical Resolution : 2\*300dpi  
Pico-litter : Variable 4-6-10pl  
Max Operating Frequency : 30Khz  
Effective Print Width : 112.35mm



# HandTop