

## SPECIFICATIONS

Model	HT1610UV		HT2512UV				HT3020UV			HT3116UV		
<b>Printhead</b>	Ricoh Gen5	Kyocera KJ4A	Ricoh Gen5	Kyocera KJ4A			Ricoh Gen5	Kyocera KJ4A		Ricoh Gen5	Kyocera KJ4A	
<b>Quantity of printheads</b>	2-4 pcs (Single row)	2-4 pcs (Single row)	3-8 pcs (Double rows)	3-4 pcs (Single row)	4-8 pcs (Double rows)	10 pcs (symmetric array)	4-8 pcs (Double rows)	4-8 pcs (Double rows)	10 pcs (symmetric array)	4-8 pcs (Double rows)	4-8 pcs (Double rows)	10 pcs (symmetric array)
<b>Resolution</b>	1200*1200dpi											
<b>Draft</b>	20m <sup>2</sup> /h	36m <sup>2</sup> /h	42m <sup>2</sup> /h	48m <sup>2</sup> /h	68m <sup>2</sup> /h	100m <sup>2</sup> /h	54m <sup>2</sup> /h	95m <sup>2</sup> /h	140m <sup>2</sup> /h	50m <sup>2</sup> /h	90m <sup>2</sup> /h	130m <sup>2</sup> /h
<b>Print speed</b>												
<b>Production</b>	13m <sup>2</sup> /h	27m <sup>2</sup> /h	30m <sup>2</sup> /h	33m <sup>2</sup> /h	53m <sup>2</sup> /h	78m <sup>2</sup> /h	38m <sup>2</sup> /h	70m <sup>2</sup> /h	95m <sup>2</sup> /h	36m <sup>2</sup> /h	66m <sup>2</sup> /h	90m <sup>2</sup> /h
<b>Quality</b>	9m <sup>2</sup> /h	20m <sup>2</sup> /h	21m <sup>2</sup> /h	23m <sup>2</sup> /h	40m <sup>2</sup> /h	56m <sup>2</sup> /h	27m <sup>2</sup> /h	53m <sup>2</sup> /h	73m <sup>2</sup> /h	25m <sup>2</sup> /h	51m <sup>2</sup> /h	70m <sup>2</sup> /h
<b>Print mode</b>	Unidirectional and bidirectional											
<b>Max width</b>	1.6m * 1.0m		2.5m * 1.22m				3.05m * 2.05m			3.05m * 1.5m		
<b>Max media thickness</b>	100mm											
<b>Media type</b>	Rigid and flexible flat materials											
<b>Ink</b>	Environmental friendly UV curable ink(VOC free)											
<b>Ink color</b>	C、M、Y、K、Lc、Lm、W (varnish is optional when there is no Lc and Lm)		C、M、Y、K、Lc、Lm、W、V									
<b>Image format</b>	Adobe Postscript Level3、PDF、JPEG、TIFF、EPS、AI											
<b>Machine size(L*W*H)</b>	3.44m * 2.21m * 1.28m		4.67m * 2.51m * 1.38m				5.22m * 3.24m * 1.38m			5.22m * 2.71m * 1.38m		
<b>Machine net weight</b>	570KG		1150KG				1520KG			1450KG		
<b>Machine gross weight</b>	990KG		1745KG				2330KG			2160KG		
<b>Power consumption</b>	5.3KW(27A)		8.3KW(20A)									
<b>Power supply</b>	230VAC.50Hz L/N/PE		400VAC.50Hz 3P/N/PE									
<b>Certification</b>	CE, FCC											
<b>RIP support</b>	Onyx, Caldera(Ricoh Gen5 Seeget rip optional)											
<b>UV Curing</b>	Mercury vapor UV lamps, LED(optional)											
<b>Interface</b>	High Speed PCIE											
<b>Environment</b>	Seperated workroom in good cleaning and ventilated condition, avoid direct sunlight Temperature: 18°C – 30°C(64°F-86°F) Constant Humidity: 30%-70%											

# HandTOP



## Create value for customers; be a world-leading manufacturer of smart digital printing equipment.

- Diversified product configuration and application solution can match the different demand in advertising, decorating, glass and other industries.
- Reliable stability combines the outstanding printing quality and speed performance.
- Top-level R&D team ensures prompt optimization and upgrade for new products and keep advanced technology in digital printing field.
- Strong worldwide after-sales service team quickly shoots your problem.
- High cost-value product brings you more business.



Shenzhen HANDTOP Tech Co.,Ltd  
 Add:The Third Factory, NO.322 Yuanhu Road, Longgang District Shenzhen China.  
 Tel: +86 0755-2796 0460  
 Fax: +86 0755-2321 7841  
 E-mail: info-handtop@handglorygroup.com  
 http://www.handtopuv.com



**HandTOP**

HT3116UV Flatbed

3.1\*1.6m MEDIA AREA

HT3020UV Flatbed

3.05\*2.05m MEDIA AREA

HT2512UV Flatbed

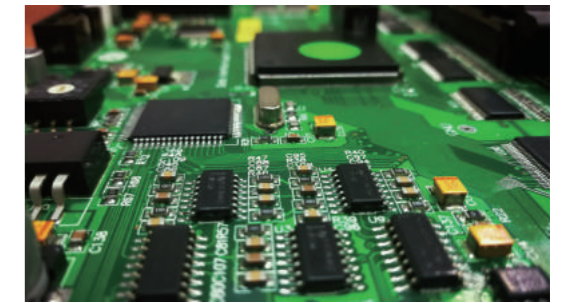
2.5\*1.22m MEDIA AREA

HT1610UV Flatbed

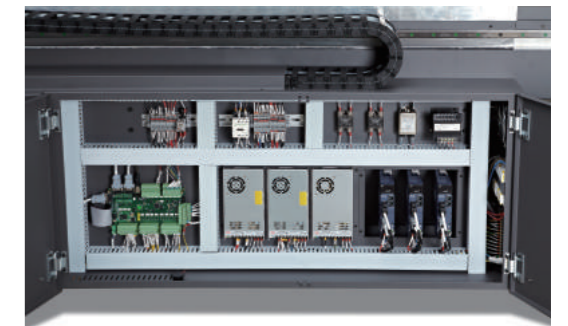
1.6\*1.0m MEDIA AREA

- 1 Automatic negative pressure system  
Using PCB board to control negative pressure, setting the negative pressure data from software.
- 2 Ricoh Gen5 Print Heads(one head with 2 colors)  
Featuring variable dots, true grayscale imaging 7, 14, and 21pl.  
  
Kyocera Print Heads(one head with 2 colors)  
Featuring variable dots, true grayscale imaging 4, 6, and 10pl at true native 300 dpi.
- 3 UV-curing Lamps/LED(optional)  
Instant curing of UV ink for fast production. Flexible to be controlled during printing.
- 4 Auto Height Detection System  
Automatically detects height of media up to 100mm thickness and calibrates print head distance for variable dot placement.
- 5 Emergency Stop Switches  
Stop operation from any corner when the printer is in emergency.
- 6 Power vacuum & Lamp Switch  
Switches for vacuum table and lamps.
- 7 Mechanical Pin Registration System  
Pin registration for accurate and consistent rigid media placement.
- 8 Reversible Vacuum Valve  
Reverse the air vacuum for easier rigid media loading and unloading.

- 9 Reversible printing function & Repeat printing mode  
Both reversible and repeat printing mode enables a higher efficiency in production.
- 10 Top Printing Speed:Up to 91 m<sup>2</sup> / hr (HT3020)  
Engineered for high-quality printing and outputs up to 91m<sup>2</sup>/hr with full bleed capacity.(HT3020 kyocera with double rows)
- 11 Static suppression(optional)  
Optional static suppression kit that eliminates static on the substrate.
- 12 On Board Control Module  
Rich functions, self-developed software, independent control module, efficient and convenient.



Self-developed, customized driver and PCB board



Industrialized wiring makes it more artistic

Kyocera KJ4A Printhead

Nozzle quantity : 2656  
Physical Resolution : 2\*300dpi  
Pico-liter : Variable 4-6-10pl  
Max Operating Frequency : 30Khz  
Effective Print Width : 112.35mm



Ricoh Gen5 Printhead

Nozzle quantity : 1280  
Physical Resolution : 600dpi  
Pico-liter : Variable 7-14-21pl  
Max Operating Frequency : 30Khz  
Effective Print Width : 54.1mm

