

What's New?

Version 12

RIP SOFTWARE - VERSION 12 - CALDERA 2018



Table of Contents

Table of Contents	2
New Features & Enhancements	3
New Features	3
New OS Supported	3
New licenses	3
Virtualization & Licenses	4
APPE5	4
CalderaDock	4
CalderaCare	5
HRIP	5
XPF file format support	5
Enhancements	6
Caldera HDL	6
PrintStandardVerifier	6
ContourNesting	6
Misc.	7
Product Naming	7
Suitable packages	7
Demo mode	7
Support	7
i-Cut cutters	7
Fotoba	7
Discontinued	8
Products	8
Features	8
Options	8
Printers	8
Cutters	8

License Agreement

Copyright 2018 Caldera. All rights reserved.

All trademarks, logos and brand names mentioned in this publication are property of their respective owners.
All images and photographs here featured are the copyright of their respective owners.

Caldera reserves the right to modify software specifications and content cited in this document without prior notice.

Caldera Version 12 is a major version that requires a new license.

To get your Version 12 license, either temporary or permanent, please contact your dealer or our Sales Team.
The update from Version 11 to Version 12 is free for customers who have subscribed to **CalderaCare**.

New Features & Enhancements

New Features

New OS Supported

Caldera RIP V12 is now supported on latest OS version of Apple **MacOS 10.14 Mojave** and official **Debian Jessie 9**.

Complete list of supported OS for version 12:

- Mac 10.11 El Capitan
- Mac 10.12 Sierra
- Mac 10.13 High Sierra
- Mac 10.14 Mojave
- Debian Mate 8.6
- Debian Jessie 8.8
- Debian Stretch 9.5 (now included in the official USB stick)

Windows can now be used via Virtual Machines and digital licenses (read the [Virtualization & Licenses](#) section).

New licenses

Caldera RIP now allows **Hardware** (with a dongle) or **Software** (without dongle) licenses. . Thanks to the dongle-less technology you will not have to wait for physical dongle to start your production. The Keyserver can either be a Linux, Mac or a Windows.

Hardware license

Access Number
Dongle Number

Software license

Access Number
Activation Code
Fingerprint

Before updating, make sure that your drivers are available in Version 12 (Info is available in our [Supported peripherals table](#)). From version 12, all your workstations must have the same version whether they behave as a client or as a server.

License registration is done in Caldera Workspace where you will be asked to select your Driver model(s). Then, you will be able to download the license file and activate **Caldera RIP**.

YOUR PRODUCTS	CONSTRUCTORS	MACHINES
Grand		
Large		
Long		
Large		
Wide		

NEW FEATURES & ENHANCEMENTS

Virtualization & Licenses

You can use Linux Virtual Machines to seamlessly run your **Caldera RIP** and use your Windows host or another Windows computer to run the license server (either via a hardware or a software license). With Caldera's license server now running on Windows, it is no longer needed to have a Linux or a macOS workstation on full Windows environments.

APPE5

Caldera RIP is the first software to include Adobe PDF Print Engine version 5. **APPE 5** has been implemented in **Version 12** with **three major enhancements** compared to **APPE 4**:

- Increased Linux performance,
- Better ISO PDF 2.0 support,
- Anti-aliasing for contone printing (twice faster and better quality compare to Global Antialiasing option).

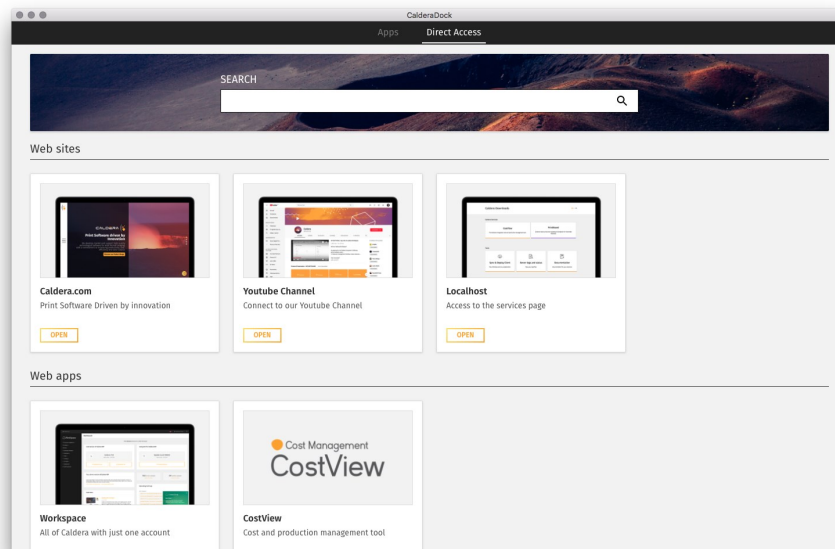
Using **Adobe PDF Print Engine** (APPE) is the guarantee to have better coherency between **Adobe Creative Cloud** software that generates PDF and **Caldera RIP** that decodes them.

CalderaDock

With our new **CalderaDock** interface, install and run apps to complete your daily tasks as fast and easily as possible directly from the **Caldera RIP** interface.

CalderaDock allows you to have a direct access to the following tools:

- Websites,
- Web applications (Workspace & CostView),
- Documentation,
- Save configurations (migrate from V11 without any risk),
- Restore,
- Clean temporary files,
- Remove images and
- Restart services.



CalderaCare

CalderaCare is the **support and maintenance solution** for your **Caldera RIP** software, that will keep your production up and running when you need it most. Whatever the issue, our team of technical experts will be on hand and a subscription to **CalderaCare** also ensures all your software products will be kept up-to-date with the latest versions and enhancements. Not only can **CalderaCare** provide you with support when you have a problem, but it comes with a range of other user benefits to help you optimize your workflow.



FAST SUPPORT

When you register a support request, the **priority** and response times are in accordance with specified guidelines. **CalderaCare** is your route to direct contact with **Caldera experts**. You can ask them to take **remote control** on your stations to troubleshoot.



ALWAYS UP-TO-DATE

Your Caldera software products covered by your **CalderaCare** subscription, will be continually updated with **new features** to enhance your workflow, including **major upgrades** to new versions. You can access to **webinars** to improve your knowledge and learn new skills.



OPTIMAL PRODUCTION

Your access to future Caldera **upgrades and version releases**, helps keep your production capabilities current, and at optimal levels. You are able to buy **driver conversions** instead of additional drivers.

HRIP

Huge Raster Image Pipeline is a new pipeline (new core engine for better performance) designed for huge input/output throughputs. HRIP allows:

- a **global acceleration by 10%** on Caldera hardware compared to V11.2,
- a **performance multiplied by 4** on multi-layers PSD and TIFF (until 28 layers), with layer remapping to spot colors compared to V11.1 and
- a **process time divided by 7** for huge raster input files (>2Gb) (*maximum speed up on C4 with a set of testing huge JPEG, TIFF, PNG files compared to V11.2 last build*).

Tex&Repeat can now process very small patterns to print on Jumbo Rolls (1 kilometer of media) in a matter of time. It has been designed for Textile, Deco, Wallpapers and Textile markets.

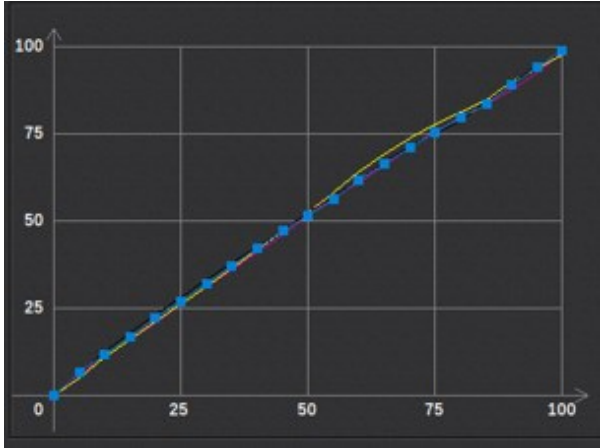
XPF file format support

To streamline textile and decoration printing workflows, you can now use the design software coming with the **MS printer** and open directly the native file format in **Caldera RIP**. XPF is the MS Ramsete III design file format that can contain patterns, layers, repetition steps and Colorways.

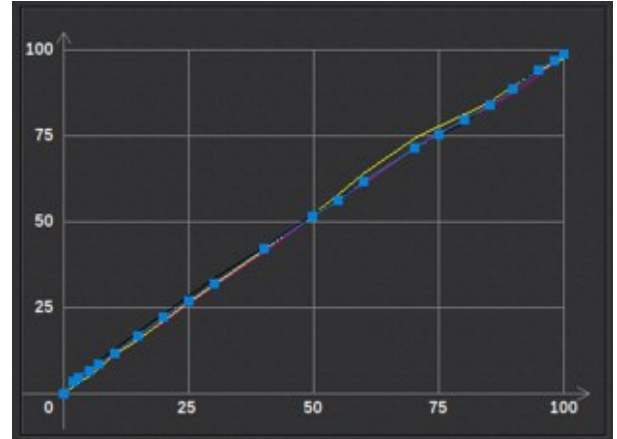
Enhancements

Caldera HDL

Caldera RIP includes a new dynamic linearization algorithm with Caldera HDL processes that increase the linearization accuracy.



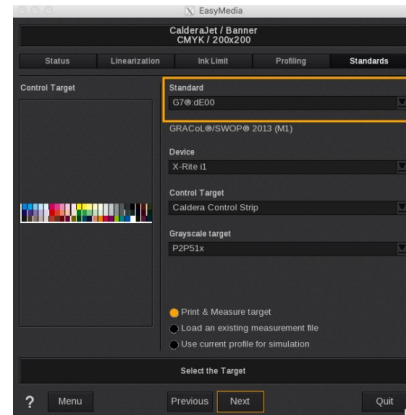
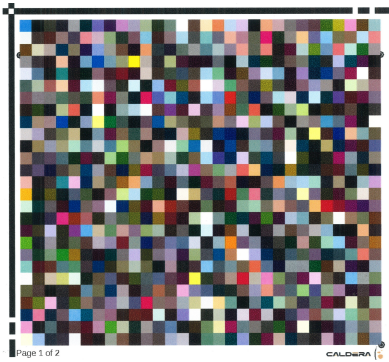
Previous linearization



New linearization with HDL processes

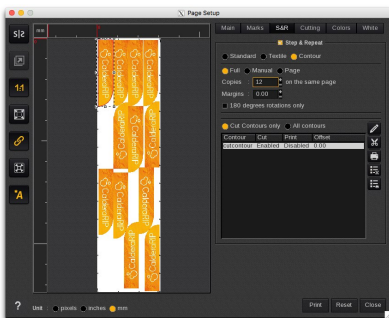
PrintStandardVerifier

New TC1617 target is available and XCMYK input profiles to be G7 without P2P. Also, PrintStandardVerifier now offers the possibility to check G7 with dE00 rules.

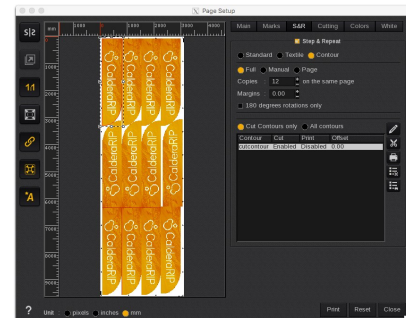


ContourNesting

ContourNesting's algorithm has been enhanced for better results.



V11 ContourNesting



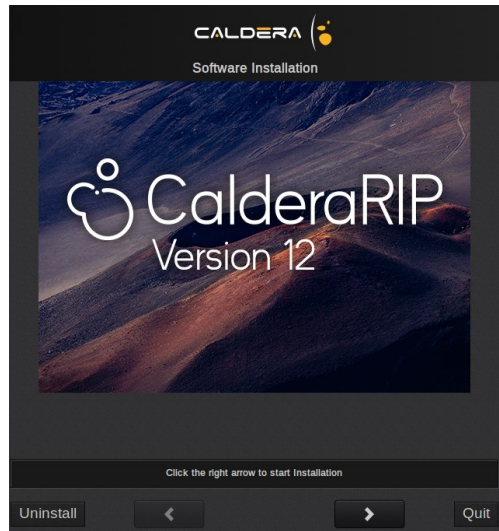
V12 ContourNesting

Misc.

Product Naming

We simplified the product naming:

- Only one product: **Caldera RIP**



- Only 3 classes of drivers:
 - **Wide** replacing LFP A,
 - **Large** replacing LFP B,
 - **Grand** replacing GFP A, GFP B, Textile A and Textile B.

Suitable packages

"A la carte " packages are now available. You are now able to create your own **Caldera RIP** package.

Demo mode

A demo license is needed to launch **Caldera RIP**. Demo mode is not available anymore.

Support

To be able to answer with higher quality to your requests, we need to change the conditions to access Caldera Experts:

- All cases will be submitted via Workspace (no more cases via email or phone calls),
- One hour credit can be bought online,
- Unlimited Access to end-users only via **CalderaCare** yearly contract,
- No more "remote control" out of **CalderaCare**.

i-Cut cutters

A change was made concerning the Automatic marks behavior. Automatic Registration Marks have to be activated manually and the placement of the marks around contours is not necessarily in the same place as before (this is due to the change of technology).

Fotoba

Fotoba basic mode is now a paying feature part of the **Trim-O-Matik** option.

Discontinued

Products

The following products are not supported in **Version 12**:

- CopyRIP
- Costview V2
- VisualRemote
- PrintBoard
- Flow+ can not be connected to **Caldera RIP** (**CalderaNexio** connector is not available anymore).

Features

Display Calibration is no more available through **EasyMedia***. A free third party calibration tool for Linux and macOS is available: <https://displaycal.net>.

Options

The following option is not supported in **Version 12**:

- Preflight

Printers

The following printers are not supported in **Version 12**:

- Fujixerox DocuWide-C842
- Gongzheng SUPERPRINT-PRO-A1060C
- NewSolution NSMULTI
- RTI Vortex 4200
- Xerox IJP2000

Cutters

The following cutters are not supported in **Version 12**:

- Mutoh Kona,
- Mutoh Ultima.

Share your Caldera experience and discover our online help on:
calderadesk.caldera.com

CALDERA - 1 rue des Frères Lumière - P.A. d'Eckbolsheim
BP 78002 - 67038 Strasbourg Cedex 2 - France

www.caldera.com - Tel. +33 388 210 000 - Fax +33 388 756 242 - contact@caldera.com