

EXTREME QUALITY.
EXTREME PRODUCTIVITY.

www.agfa.com

AGFA 

Jeti LED series

Jeti Mira MG2716 LED

— 2700 x 1600/3200 mm, 248 m²/h —



Jeti Mira MG2732 LED

This award-winning true flatbed system based on UV LED inkjet technology offers impressive print quality across a wide variety of materials at high production speeds. Available in two sizes, with a width of 2.69 m and a worktop depth of 1.6 m or 3.2 m, it achieves throughputs of up to 248 m²/h. The optional roll-to-roll unit lets you print on flexible media up to 2.05 m wide. Further options include varnish or primer print heads.



Jeti Tauro H2500 LED

— 2540 mm, 275 m²/h —



The Jeti Tauro H2500 LED is a true hybrid inkjet press: ruggedly built to easily handle extreme workloads, 24/7 printing with speeds up to 254 m²/h on a wide variety of rigid and flexible substrates. It is suited for substrate widths of up to 2.54 m and rigid media up to 4 m, offering you countless options to create eye-catching prints.

Options include an Automatic Board Feeder and Automatic Unloader, white and primer print heads (4W, 4W+2P, or 8W), and a Master Roll-to-Roll module for jumbo rolls of up to 700 kg per roll.



Jeti Tauro H3300 LED

Agfa's flagship hybrid press based on UV LED inkjet technology offers high productivity and quality on a wide range of materials with the lowest ink consumption. Available as 4-colour or 6-colour model with a printing width of 3.3 m, it reaches throughputs of up to 453 m²/h. The Jeti Tauro H3300 LED can be enhanced with semi-automatic or full-automatic loading and unloading of rigid media. Furthermore, it can be fitted with a Light Roll-to-Roll for single rolls of up to 200 kg or a Master Roll-to-Roll system for jumbo rolls of up to 700 kg per roll in both single- and dual-roll mode. Optional features include white and primer print heads (12W or 8W+4P) for both the 4-colour and 6-colour versions.

— 3300 mm, 453 m²/h —



Anapurna LED series

The Anapurna LED series for wide-format printing is the perfect solution for visual communication specialists, digital printers, photo labs and medium-sized screen printing companies that are looking to print on rigid and flexible material. Anapurna LEDs have a print width of up to 3.2m and provide high quality and productivity for indoor & outdoor applications. UV LED curing allows to print on a wider range of media, while saving energy, costs and time.

White print heads enable printing on transparent materials for back-lit applications, or using white as spot colour or for elevated printing. Combined with Agfa's own Anapurna inks, the Anapurna LED series guarantees a large colour gamut, reproduction of small text up to 4 point, excellent tonal rendering and a low ink consumption. Equipped with powerful 16 Watt/cm² air-cooled LED lamps, every Anapurna LED offers various advantages in economic, ecological and business terms.

The standard roll-to-roll system is built to ensure perfect tensioning of the material thus avoiding skewing and wrinkling. Ionizing bars mounted on the print carriage remove electrostatic charges from the substrate, ensuring optimal positioning of ink drops without spray.

Anapurna H1650i LED



1650 mm, 63 m²/h

Anapurna H2050i LED



2050 mm, 104 m²/h

Anapurna H2500i LED



2500 mm, 115 m²/h

Anapurna H3200i LED



3200 mm, 129 m²/h

Anapurna RTR3200i LED



3200 mm, 127 m²/h

Anapurna FB2540i LED



2540 x 1540 mm, 96 m²/h

Key benefits of Agfa's Anapurna LED series

- High-quality, high-productivity printing on a wide range of rigid and flexible media
- Robust industrial engineering fit for high workloads
- UV LED lamps that enable printing on sensitive materials — saving costs, time and the environment
- Agfa-made UV LED inks for fast drying, material versatility and a very wide colour gamut
- Printing pre-, sandwich and post-white in one run
- Thin Ink Layer technology for the lowest ink consumption in the market
- Powered by Asanti workflow software

Oberon RTR3300

The Oberon RTR3300 is a dedicated 3.3 m high-end roll-to-roll machine that combines excellent print quality and high throughput with a unique ease of use and optimized media consumption. It covers significant media diversity and a wide range of applications. Featuring UV LED curing and a water-cooled print plate that keeps the printing zone at room temperature, the Oberon RTR3300 is capable of printing on a wide range of flexible materials, even the most heat-sensitive ones. The four-colour version stands out by its ability to print white in different modes. It thus transforms self-adhesive vinyl, static cling or backlit film into vibrant, multi-layered graphics that grab attention. The Oberon's capability to print on mesh without liner also enables you to expand your horizon and meet your customers' creative dreams. Its dual-roll option enables more efficient printing on two rolls of smaller media, up to 1.6 m wide. A number of smart features, including the free-fall printing option, a double safety light curtain and a light box enabling you to check the print quality of backlit prints right away, optimizes media use. Agfa's UV LED inks on the Oberon RTR3300 were optimized for flexible media and excel in smooth tonal rendering and razor-sharp texts. Having obtained the highest category of GREENGUARD GOLD certification, they meet some of the world's most rigorous chemical emissions standards. The Oberon RTR3300 is driven by Agfa's wide-format workflow software Asanti, which automates and simplifies the entire printing process from prepress through production to finishing.

3300 mm, 150 m²/h



Matched component approach

Every Agfa large-format system builds on decades of experience in designing, developing and manufacturing integrated inkjet printing systems. We know how all components interact. Our unique system approach aligns engine, inks, media, workflow and colour management software to ensure the highest quality and a consistent and reliable production process from start to finish.

Agfa UV LED inks

Specially formulated to print on rigid or flexible media, Agfa's award-winning UV LED inks broaden the scope of possible applications. Whatever the medium or intended use – general applications, indoor or outdoor – accuracy and excellent adhesion are a given.

Agfa-made UV inks boast a wide colour gamut and high colour vibrancy, resulting in lively yet natural prints that will impress and inspire every time. Agfa inks are LED cured instantly, delivering consistent high-quality results, batch after batch. What's more, this vividness is created to last, even when subjected to outdoor weather conditions.

Thanks to Agfa's patented 'Thin Ink Layer' technology, which involves the optimal dispersion and high pigment load of Agfa-made inks combined with Asanti's algorithms, ink consumption per square meter is the lowest on the market. However, this does not mean that we compromise on quality or performance in any way. Quite the opposite is true – the low ink consumption results in eye-catching prints while also preventing clogging, offering stable jetting performance and helping you save on your budget.

Agfa UV LED inks obtained multiple certifications and comply with a range of industry norms that pertain to the restricted use of chemicals listed by the European Union, to chemical emissions and air quality in indoor applications, to safety for toys regarding heavy metals migration and to the restriction of hazardous substances in electrical and electronic equipment.



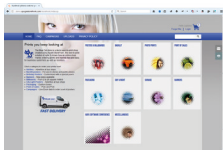
Asanti StoreFront

Make it easy for customers to upload files and order large-format prints using our Asanti web-to-print software solution. Streamline order fulfilment and improve customer retention. Reduce costs and improve time-to-market.



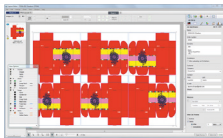
Stop creating the same type of quotes every day. Stop searching for the files that your customer uploaded somewhere. Asanti StoreFront makes it easy for your customers to order products online. Create an easy to use portal in which your customers can place orders, whenever they want and from wherever they are.

Asanti StoreFront streamlines your order intake and extends your customer service.



You don't need HTML know-how or scripting skills to set up stores with Asanti StoreFront. Let us take care of system maintenance and security while you focus on your core business: satisfied customers who keep coming back with new orders.

Simplify the ordering process and offer a 24/7 service to your customers.



Print jobs are exported to FTP or your network. When used in conjunction with Asanti Production, the orders are automatically downloaded and queued for production. Prepress operators remain in control and can still step-and-repeat POP orders, tile banners and add all necessary marks, if needed.

The integration saves operator time and allows you to centralise production for multiple printers.

Asanti Production

Asanti is a complete, automated Sign & Display production hub and workflow tool featuring Agfa's unique and award-winning colour management solution, integration with the latest version of Adobe PDF Print Engine (APPE), highly specific application functionalities (e.g. nesting, see-through concept, proofing support) and fast, automatic pre-flighting.

Streamline your workflow with Asanti and you'll avoid errors, minimize manual interventions, shorten pre-press procedures and simplify your entire printing process. The result? A fully accountable end-to-end quality and data management solution that boosts your business.

Key benefits

- One tool to manage all your print data and devices
- Built-in Agfa colour management, for consistent colour quality and reproduction with minimal effort.
- Automatic pre-flighting, PDF checking and managing of your entire printing process.
- Integrated solution for increased productivity and reliable, predictable and high-quality output.
- Intuitive user interface to manage everything from a single digital environment.
- Integration with Asanti StoreFront web-to-print, Adobe PDF Print Engine (APPE) and PrintSphere.



Microsoft Partner
Gold Application Development



GOLD
Solution Partner

Agfa partners with the world's leading software companies to deliver first-class solutions for print production workflows.



ASANTI Network

Discover a wealth of knowledge on Asanti Network, the official online community for Asanti users.

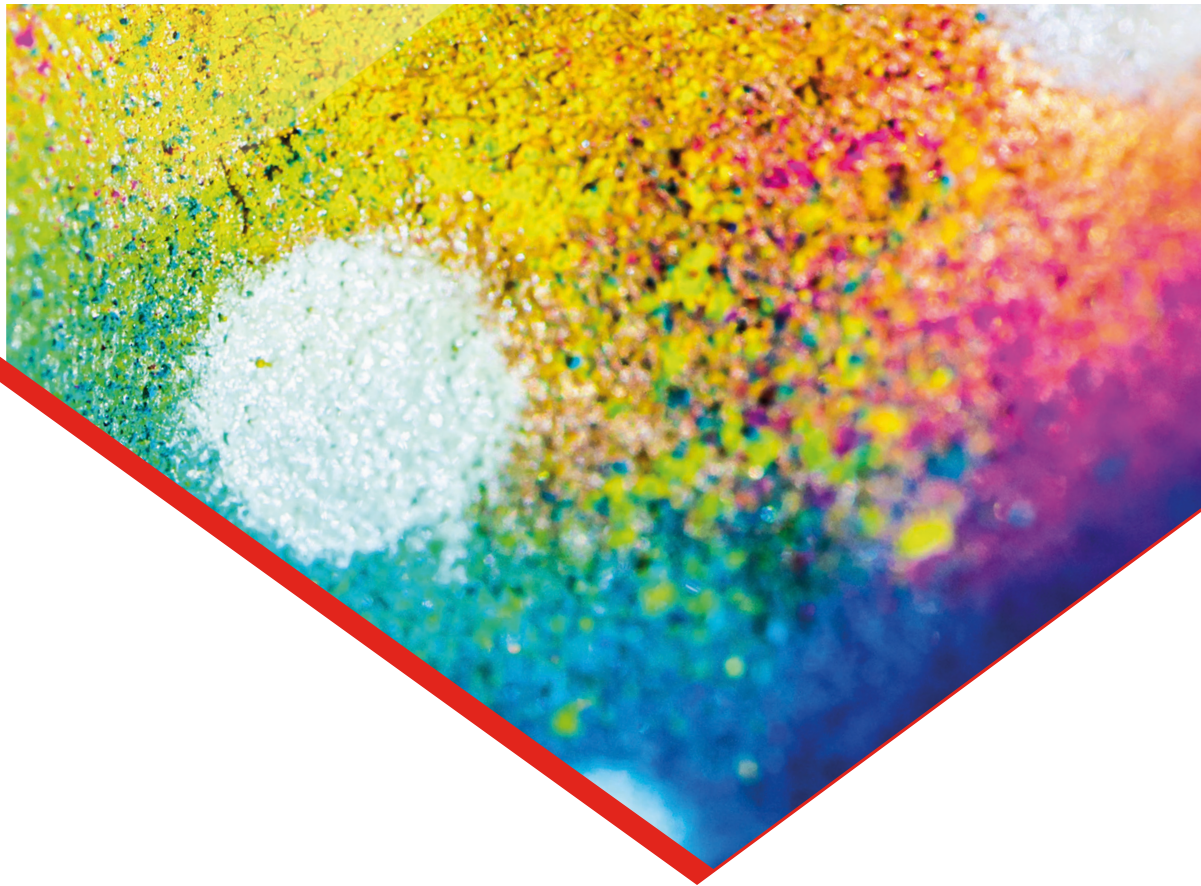
EXTREME COMMITMENT.

Today's printing professionals face tough challenges. How can you stay on top of things when turnaround is faster than ever? What's the best way to manage your increasingly complex workflows? Are you keeping pace with all printing technologies? How to control costs and increase profit margins?

If questions like these sound familiar, we would love to deploy our know-how and expertise to help you find the right answers and to help you grow your business.

We believe in print as an essential and powerful medium of communication. Our mission is to enable printing businesses to achieve profitable growth. We do this by offering you integrated solutions which are innovative, reliable, sustainable, cost-effective and price-competitive, enabling you to adjust swiftly to new market demands. In doing so, we rely on more than 150 years of experience and innovation.

www.agfa.com



BEST PRINT QUALITY

AGFA

Excellent Rendering

Details in shadows



Sharp vectors

Details in highlights



Smooth skin tone rendering and smooth ramp-ups over tonal range



Lowest noise rendition

True Colours



Large colour gamut and accurate spot colour mapping

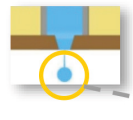


Artefact-free solid colour reproduction



Neutral grey balance

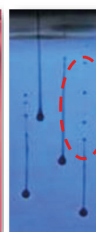
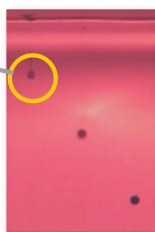
Tuned Agfa ink with Agfa waveform



AGFA



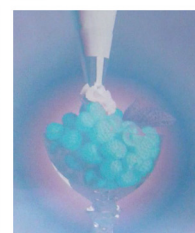
Others



Agfa's optimal drop formation achieves:

- minimal tail length of ink drop
- outstanding dot positioning
- avoiding mist / ink satellites

Asanti InkSave Dynamic Ink Split (DIS)



Agfa's patented technology to make optimal usage of "light" colours (Lc—Lm—Lk)

EXTREME PRO
EXTREME

A

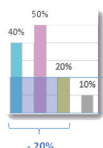
Agfa

LOWEST INK CONSUMPTION

Asanti InkSave GCR/UCR



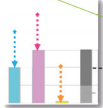
Original
C 40%
M 50%
Y 20%
K 10%



Grey component = 20%

20% 20% 20% 20%

GCR subtracts grey component (20% CMY) from colours and adds to black



GCR
Orig GCR Result
C 40 - 20 20
M 50 - 20 30
Y 20 - 20 0
K 10 + 20 30

Asanti InkSave

Dedicated tools to control ink limits for 4-colour and 6-colour printing

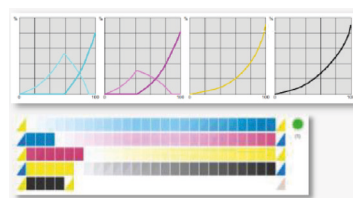
Set limits separately

CM	200	C+xx	300
CY	200	M+xx	300
MY	200	Y+xx	300
xxK	200	K+xx	300
CMY	300		
xxK	300		
CMYK	340		
Calculated TAC:	340.0		
<input checked="" type="checkbox"/> Override TAC with:	340.0		
<input type="checkbox"/> Set TAC only			
TAC:	250.0		

Result: reduced ink usage without loss of quality

PRODUCTIVITY
QUALITY

Ink/Media Profiles

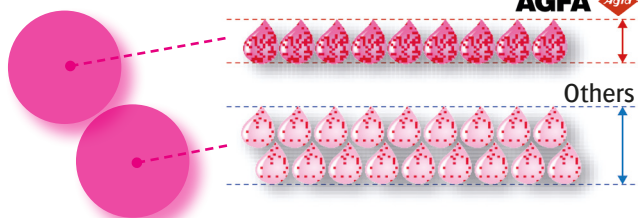
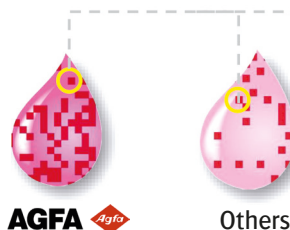


Agfa's own Calibrated Print Mode (CPM) bundles all relevant settings for easy operator access in Asanti workflow.

Thin Ink Layer technology

Agfa inks with high pigment load

- Lowest ink usage
- Enhanced print quality



Agfa's Thin Ink Layer technology is the result of our ability to develop and manufacture inks with the highest pigment load and our superior dispersion technology.

