



# PALBOARD®

## Multilayer PVC Composite Panel with Recycled Core

Choose quality and versatility with PALBOARD.

High quality rigid surfaces for premium printing, ideal for sign and display applications.

Lightweight foam core with up to 50% PIR waste, helping you achieve sustainability goals.

Versatile machining and CNC processes for adhesive-free, fastener-free display units and exhibition models.

Suitable for outdoor use.

### Typical Applications

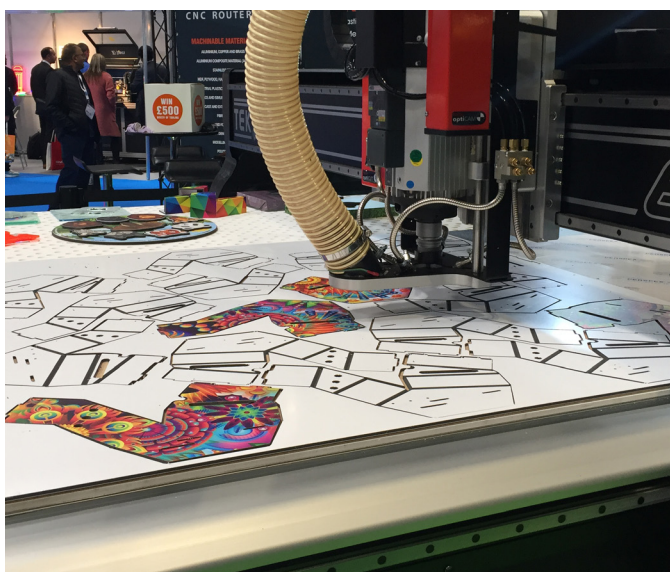
- Digital and screen printing
- POP and retail displays
- Advertising signage
- Exhibition booth and display
- Model Making
- Shelving and organizational storage
- Shopfitting & Design



PALRAM is a partner member of Vinyl Plus



Contains up to 50% recycled plastics



Superior Print Surface



Chemical Resistant



Superior Strength



Lightweight



Easy to Fabricate



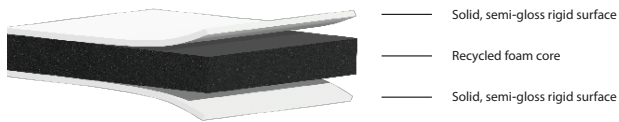
Premium Solution

## PALBOARD Range Availability

### PALBOARD 3D

#### Three-Layer Design Substrate

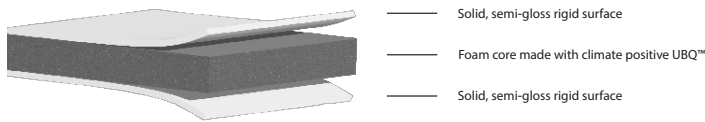
For three-dimension display units and designed models. Ideal for V-groove fastener-free and adhesive-free assembly.



### PALBOARD TERRA

#### With Measurable Carbon Removal

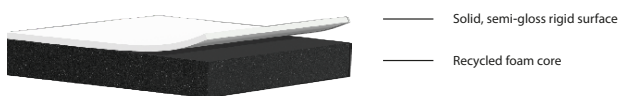
Environmentally friendly sign display substrate with a production process that captures more CO2 than it emits.



### PALBOARD 2D

#### Two-Layer Print Sub

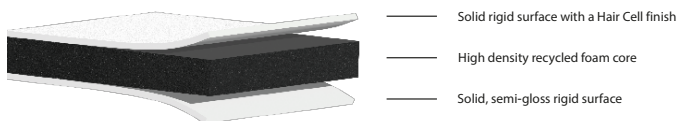
Ultra smooth bright white surface with black foam PVC core. Dent and scratch resistant, for quality signage and print applications



### PALBOARD 3D MAX

#### Extra Rigid Three-Layer Substrate

Extra strong and durable three-layer substrate with a high-density foam core. Ideal for large scale models that require structural stability.



PALBOARD	Thickness (mm)	Width (mm)	Color
<b>PALBOARD 3D</b>	2-10	1220	White/Black/White
		1500	White/White/White
		2030	Black/Black/Black
<b>PALBOARD TERRA</b>	3-10	1220	White/Grey/White
<b>PALBOARD 2D</b>	2-10	1220	White/Black
<b>PALBOARD 3D MAX</b>	2-6	1220 1500	Custom Color Matching

## Typical Physical Properties

Property	Method*	Conditions	Units	Value
<b>Physical</b>				
	D-792		g/cm³	1,2
Density	ASTM D-792		g/cm3	0.58 - 1.07
Water absorption	ASTM D-570	24 hr @ 23°C	%	<1%
<b>Mechanical</b>				
Flexural modulus	ASTM D-790		MPa	1400 - 2100
Shore hardness	ASTM D-2240		Shore D	55 - 75
<b>Thermal</b>				
Service temperature range			°C	-10°C to 55°C
Heat deflection temperature	ASTM D-648	Load: 1.82 MPa	°C	55°C
Coefficient of linear thermal expansion	ASTM D-696		10-5/°C	6.7
<b>Electrical</b>				
Surface resistance	ASTM D-257		Ohm	<10¹²

\*The properties range includes versions of the PALBOARD product line. Contact your local Palram representative for more information.



Scan For Installation Guide